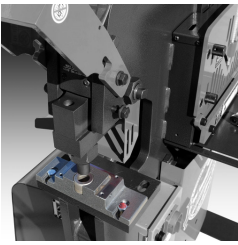
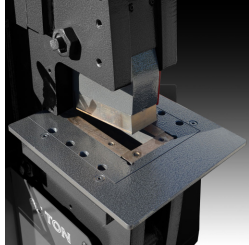
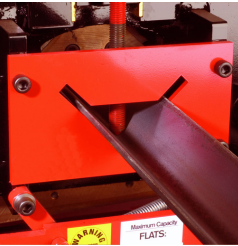
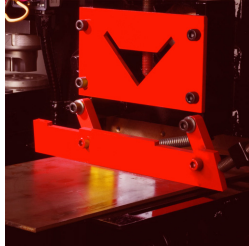


75 Ton Ironworker

Technical Specifications	
Rated capacity <small>**Rated at 65,000 psi tensile strength</small>	75 Ton
Number of work stations	4
Throat depth	10"
Maximum capacity	1-1/16" dia. thru 7/8" plate
Largest standard punch	1-1/16" punch
Open height	8-3/4"
Closed height	6-15/16"
Stroke	1-13/16"
Table size	6" x 10"
Hydraulic system	17 gallon reservoir 3,500 PSI, 3-1/2" ram
Standard motor	7.5 HP, 3 Phase, 208V or 230V - 22 amp
Optional motors	7.5 HP, 3 Phase, 460V - 11 amp 7.5 HP, 3 Phase, 575V - 8 amp 5 HP, 1 Phase, 208V or 230V - 23 amp 7.5 HP, 1 Phase, 208V or 230V - 36 amp <small>(required for single phase Hydraulic Accessory Pack)</small>
Dimensions	50" W x 45" D x 60-1/4" H
Shipping Weight	4,100 lbs.



STANDARD FEATURES

	Punch Station with pedestal die table 219 Punch and 413 Die		Coper Notcher 2-1/2" x 5" x 1/2" mild steel
	Angle Shear 5" x 5" x 1/2" mild Steel		Flat Bar Shear 1/2" x 14" 3/4" x 10" mild Steel

- Fully guarded
- Gauge table
- Adjustable steel strippers
- Fully charged hydraulic system
- Electric stroke control
- Shear blades reversible for extra long life
- Direct drive pump

Ironworker Accessories

PUNCH • SHEAR • COPE • NOTCH • BEND

Toolpack-1



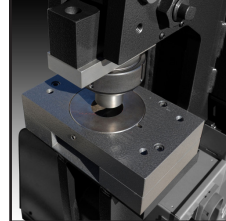
14 sets of 219 punches and 413 dies
1/4" to 1-1/16" in 1/16" increments

Toolpack-2



8 sets of 228 punches and 419 dies

Oversized Punching Attachments



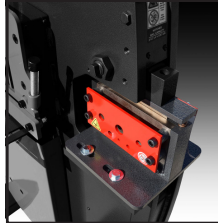
Oversized attachment up to 1-1/2" round
Oversized attachment (shown) up to 4" round

Magnetic Accessory Light



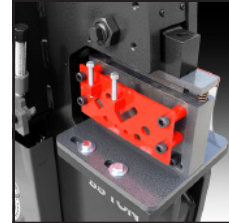
Connects to the Ironworker to provide task lighting

Rod Shear



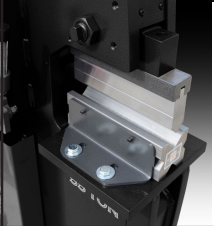
Reduce deformation in 1/4" to 1" mild steel rod

Multi-Shear



Combined Flat Bar, Angle, and Rod Shear for mild steel

Press Brake



Controlled, repeatable bends in 1/4" thick mild steel

Pipe Notcher Housing



Notch Up to 2" Schedule 40 pipe (requires dies)

Pipe Notcher Dies



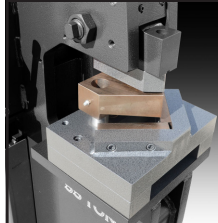
Standard dies sizes up to 2" Schedule 40 pipe

Turret Pipe Notcher Housing



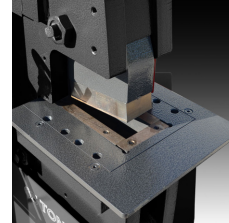
Load 3 different pipe notcher dies at once and quickly switch from one size to the next Up to 2" Schedule 40 pipe (requires dies)

Angle Notcher



Precise 92° Notch in 1/4" mild steel

Coper Notcher



Precisely notch plate or angle up to 2" mild steel

Auto Cut



Adjustable proximity switch automates production when cutting repeatable lengths

Custom Tooling



We can manufacture your custom tool, whether it's a modification to a stock punch or a custom die set.



Scan to view our Ironworkers on our website

All of our ironworkers feature multiple workstations, allowing you to outfit your machine with a variety of optional attachments. This enables you to go from one operation to another without time-consuming tooling changes.