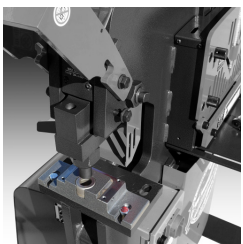
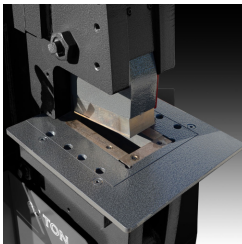

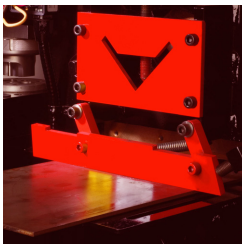


# 65 Ton Ironworker

Technical Specifications	
Rated capacity <small>**Rated at 65,000 psi tensile strength</small>	65 Ton
Number of work stations	5
Throat depth	9- <sup>3</sup> / <sub>4</sub> "
Maximum capacity	1- <sup>1</sup> / <sub>16</sub> " dia. thru 3/4" mild steel
Largest standard punch	1- <sup>1</sup> / <sub>16</sub> " punch
Open height	8- <sup>3</sup> / <sub>4</sub> "
Closed height	6- <sup>15</sup> / <sub>16</sub> "
Stroke	1- <sup>13</sup> / <sub>16</sub> "
Table size	6" x 10"
Open Cavity	12" W x 8-3/4" H 43-1/2" Operating Height
Hydraulic system	17 gallon reservoir 3,500 PSI, 3- <sup>1</sup> / <sub>2</sub> " ram
Standard motor	7.5 HP, 3 phase 208V or 230V - 22 amp
Optional motors	7.5 HP, 3 Phase, 460V - 11 amp 7.5 HP, 3 Phase, 575V - 8 amp 5 HP, 1 Phase, 230V - 23 amp 7.5 HP, 1 Phase, 230V - 36 amp <small>(required for Hydraulic Accessory Pack)</small>
Dimensions	62- <sup>1</sup> / <sub>8</sub> " W x 45" D x 57" H
Shipping Weight	4,750 lbs.



## STANDARD FEATURES

	Punch Station with pedestal die table 219 Punch and 413 Die		Coper Notcher 2- <sup>1</sup> / <sub>2</sub> " x 5" x 3/8" mild steel
	Angle Shear 5" x 5" x 3/8" mild Steel		Flat Bar Shear 3/8" x 24" 1/2" x 14" 1" x 4" mild Steel

- Fully guarded
- Gauge table
- Adjustable steel strippers
- Fully charged hydraulic system
- Electric stroke control
- Shear blades reversible for extra long life
- Direct drive pump
- Open station for optional tooling

# Ironworker Accessories

## PUNCH • SHEAR • COPE • NOTCH • BEND

### Toolpack-1



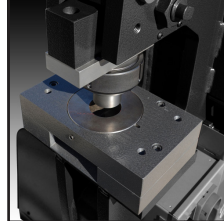
14 sets of 219 punches and 413 dies  
1/4" to 1-1/16" in 1/16" increments

### Toolpack-2



8 sets of 228 punches and 419 dies

### Oversized Punching Attachments



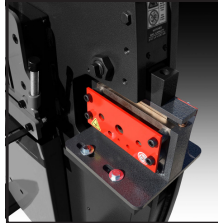
**Oversized attachment**  
up to 1-1/2" round  
**Oversized attachment (shown)**  
up to 4" round

### Magnetic Accessory Light



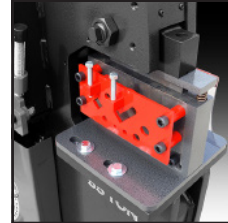
Connects to the Ironworker to provide task lighting

### Rod Shear



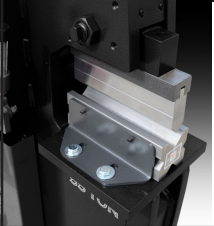
Reduce deformation in 1/4" to 1" mild steel rod

### Multi-Shear



Combined Flat Bar, Angle, and Rod Shear for mild steel

### Press Brake



Controlled, repeatable bends in 1/4" thick mild steel

### Pipe Notcher Housing



Notch Up to 2" Schedule 40 pipe (requires dies)

### Pipe Notcher Dies



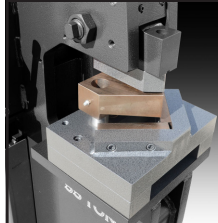
Standard dies sizes up to 2" Schedule 40 pipe

### Turret Pipe Notcher Housing



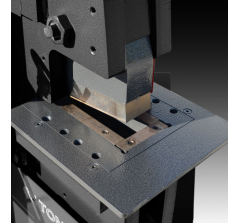
Load 3 different pipe notcher dies at once and quickly switch from one size to the next Up to 2" Schedule 40 pipe (requires dies)

### Angle Notcher



Precise 92° Notch in 1/4" mild steel

### Coper Notcher



Precisely notch plate or angle up to 2" mild steel

### Auto Cut



Adjustable proximity switch automates production when cutting repeatable lengths

### Custom Tooling



We can manufacture your custom tool, whether it's a modification to a stock punch or a custom die set.



Scan to view our Ironworkers on our website

All of our ironworkers feature multiple workstations, allowing you to outfit your machine with a variety of optional attachments. This enables you to go from one operation to another without time-consuming tooling changes.